

# Syphilis



Syphilis - *Treponema pallidum*



Syphilis - *Treponema pallidum* on darkfield



Primary syphilis-chancere



Primary syphilis - chancre



Primary syphilis - chancre



Primary syphilis - chancre of anus



Primary syphilis - chancre





Secondary syphilis - papulosquamous rash



Secondary syphilis - papulo-pustular rash



## Secondary syphilis



## Secondary syphilis



## Secondary syphilis



Secondary syphilis - alopecia



Late syphilis - serpiginous gummata of forearm

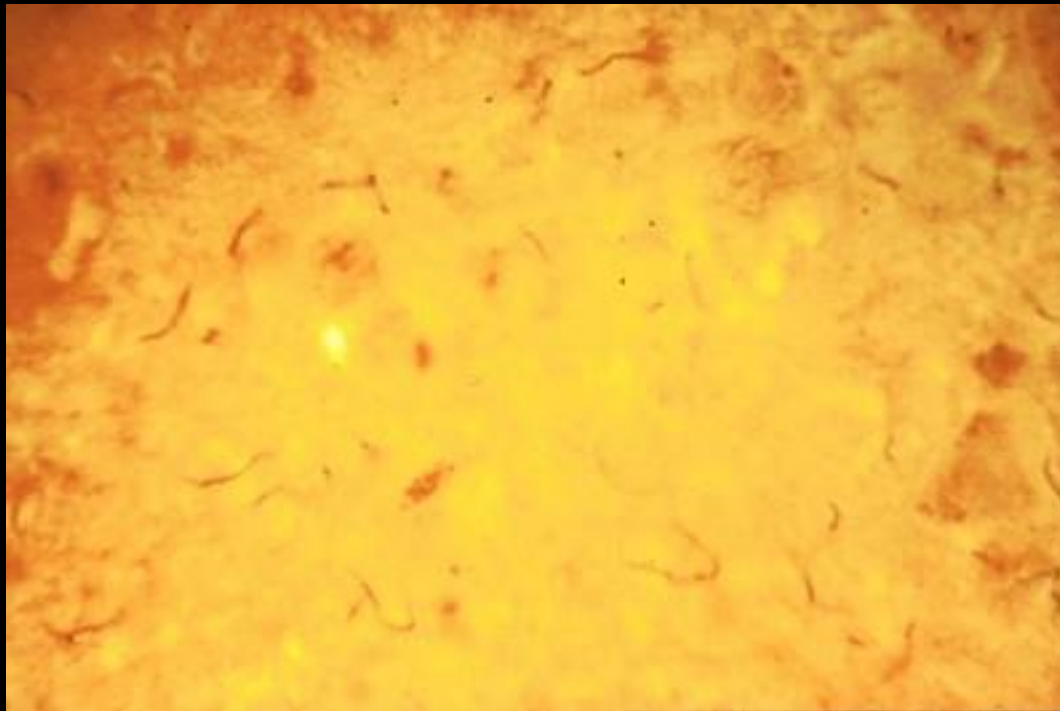


Late syphilis - ulcerating gumma





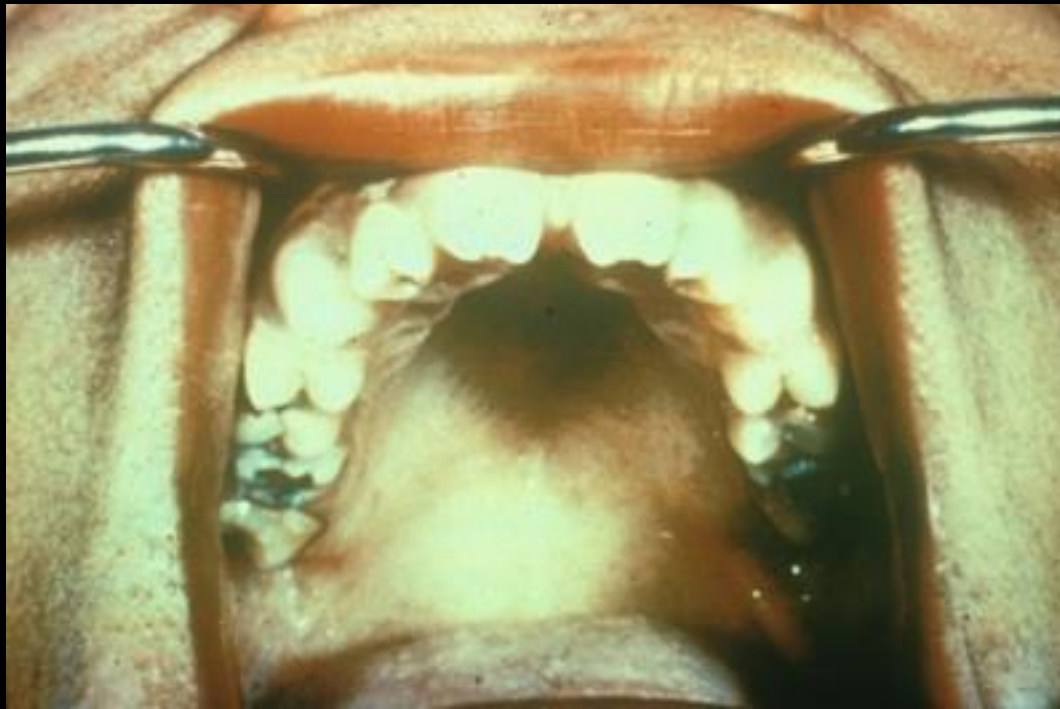
Cardiovascular syphilis - narrowing of coronary ostia in  
aortus



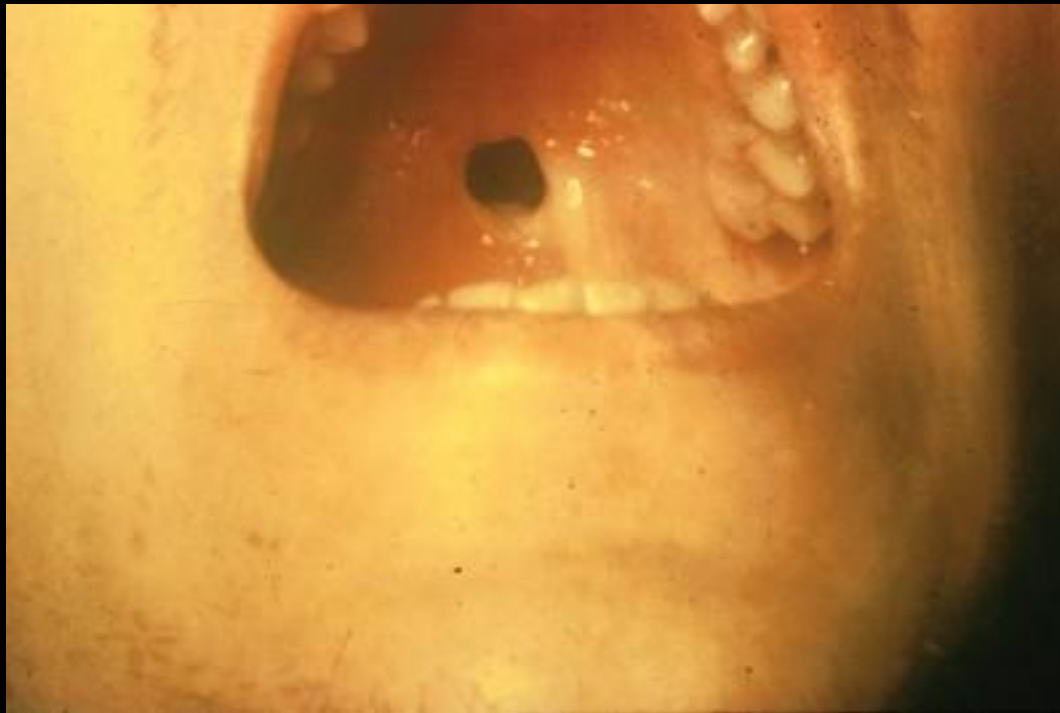
Neurosyphilis - spirochetes in neural tissue



Congenital syphilis - mucous patches



Congenital syphilis - - Hutchinson's teeth



Congenital syphilis - perforation of palate